

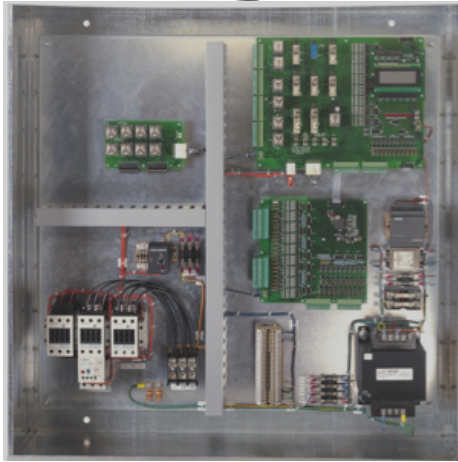
# Vertitron / EMS Integrated Controller



Elevator  
Control  
Disconnect



Door  
Control  
Disconnect



Interface Wiring  
(Estimated 4 Hours Labor)



(Estimated 4 - 6 Hours Labor)

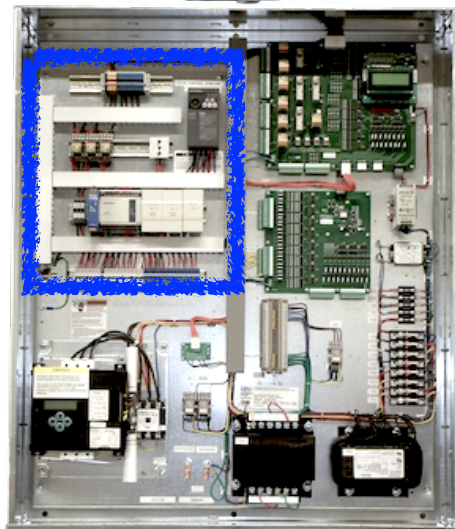
Vertitron Hydraulic Controller

# Vertitron / EMS Integrated Controller

Single Disconnect  
for Elevator and  
Door Control



EMS Closed Loop  
Door Control



- Reduces field labor
- Field Programmable
- Saves space in the Machine Room
- Requires only 1 Disconnect
- One Panel to mount and wire
- Eliminates Interface Wiring
- Non-Proprietary
- On-Board Diagnostics
- 18 Month Warranty